

F J R A S  
M A J Z O U B  
INTERIOR ARCHITECT

# “A TOUCH OF GOLD BETWEEN THE LINES

FIRAS ALMAJZOUB

---



# ABOUT FIRAS MAJZOUB INTERIORS

---

1

FIRAS MAJZOUB INTERIOR ARCHITECTS' design creations manifest themselves in aesthetic expressions that combine art and science together to indulge the senses and stimulate delightful experiences.

The uniqueness of our interiors stems from the company's commitment to create physical environments that positively impact the lives of its users in innovative ways which creatively blend the physical, spiritual, cultural and natural aspects of the environment.

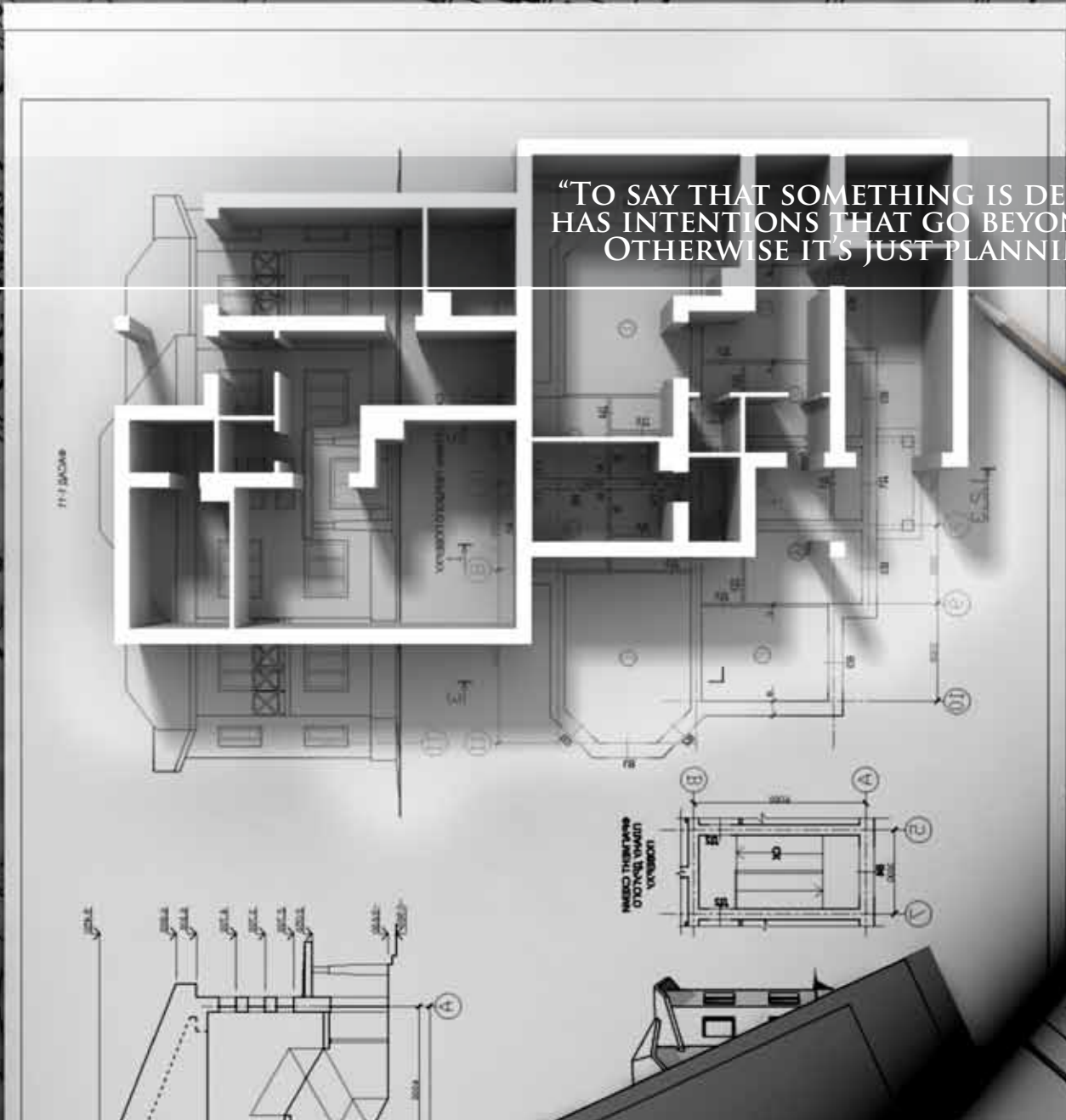
Since its establishment in 2006, the company has catered innovative and unique interior design solutions for a wide range of clients in the Middle East positioning itself as an emerging leader in the field. The company's rich portfolio includes private and public sectors projects ranging from residential and hospitality projects to commercial and leisure amenities.

FIRAS MAJZOUB INTERIOR ARCHITECTS seek to create a new paradigm of interior design in Jordan and the region utilizing the latest technologies and international standards. We specialize in providing the highest level of expertise and innovation. We have a distinctive ability to understand our clients' needs and transforming space in a way that serves these unique needs.

We work diligently to understand the spirit and nuance of your culture so we can provide you with the best design solutions, and a successful project that exceeds your expectations.

We guarantee the originality of the design solutions we offer to our diverse clientele which are delivered with the highest standards and levels of innovation and authenticity





“TO SAY THAT SOMETHING IS DESIGNED MEANS IT HAS INTENTIONS THAT GO BEYOND ITS FUNCTION. OTHERWISE IT’S JUST PLANNING.” AYSE BIRSEL

MAKES THEM AND  
OTHERS UNDER  
VARIABLE

# SERVICES

---

FIRAS MAJZOUB INTERIORS provides:

## 1) DESIGN

We provide customized interior design consultancy and solutions that fit clients' requirements based on our belief that a design's aesthetic value is not only derived from its monetary value but also from its relevance, innovation and functionality

The company offers various packages based on scale, volume of work and the amount of specialist design & installation input that clients require. Such packages vary from concept development, detailed design plans, furniture design and guidelines manual development catered to projects in the following spheres:

- Residential
- Commercial and retail
- Leisure
- Hospitality

## 2) EXECUTION

Our team excels in transforming space into aesthetic fantasies. We offer our clients reliable execution services which include consultancy, renovation and adaptation services based on the highest standards and most efficient implementation methodologies.

Our execution services are paired with our design consultancy or provided independently with the highest standards of execution and attention to details.

FIRAS MAJZOUB INTERIOR ARCHITECTS have distinguished expertise in executing hospitality projects including 5-star hotels and beach resorts.

## 3) SUPERVISION

Because we are committed to transforming our clients' fantasies into ravishing realities, we provide supervision services that ensure the proper implementation of space conversion. Our supervision services complement our design consultancy and execution services to ensure that the project is handled properly and according to the highest international standards of quality, functionality, style and efficiency.

All our services are rendered in the most professional, detail-oriented and timely manner to ensure the provision of the best value of clients' investment and money.

A collage of design-related elements. On the left, a stack of books is visible, with a brown folder or tab on top. The background is a mix of a colorful, curved color palette with various shades of red, orange, yellow, green, blue, and purple, and architectural blueprints with technical drawings and lines. The overall composition is dynamic and layered.

“DESIGN IS IN EVERYTHING WE MAKE, BUT IT’S ALSO BETWEEN THOSE THINGS. IT’S A MIX OF CRAFT, SCIENCE, STORYTELLING, PROPAGANDA, AND PHILOSOPHY.” ERIK ADIGARD



# TEAM & FACILITIES

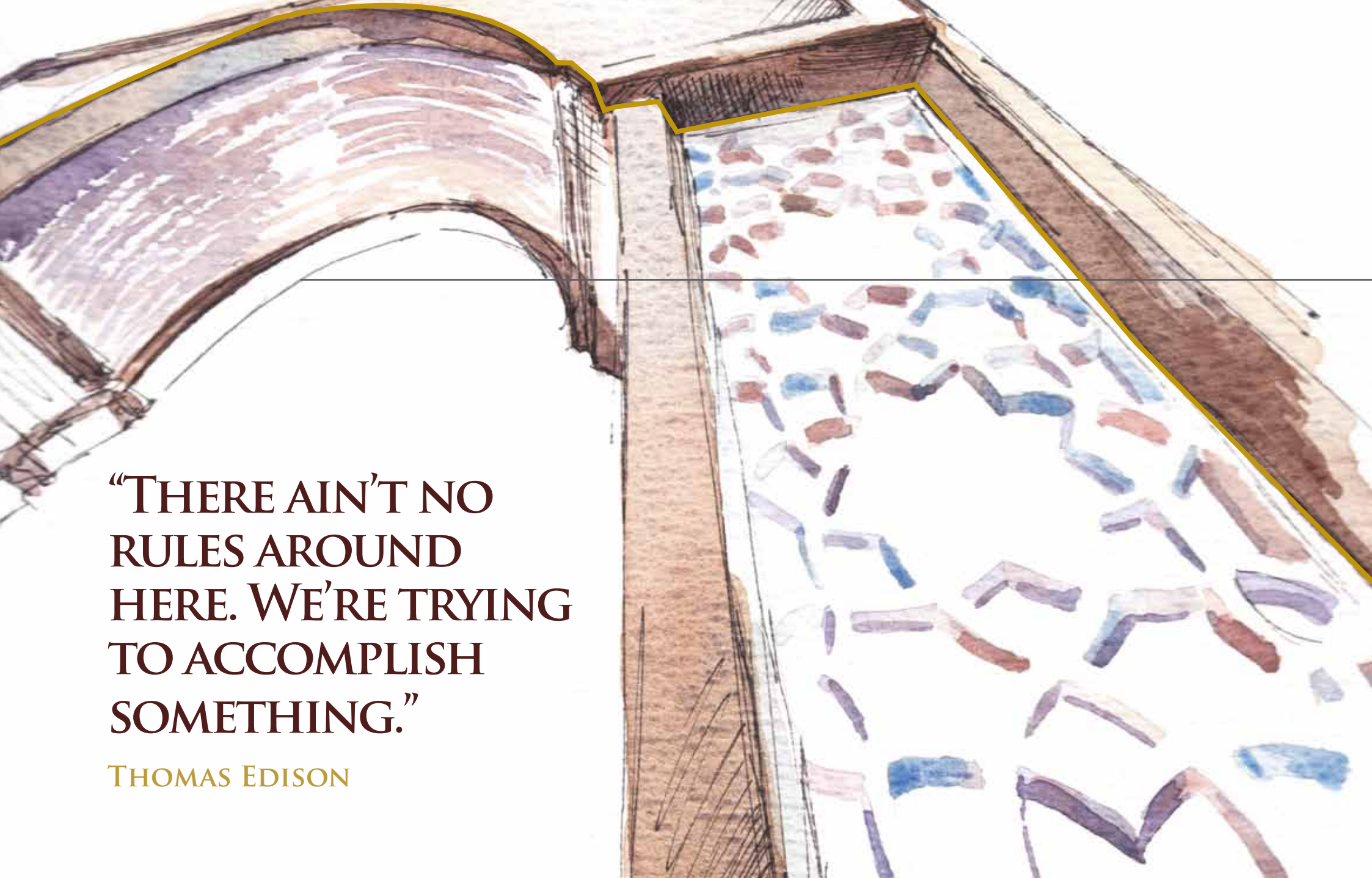
---

The connection between FIRAS MAJZOUN INTERIORS' approach to projects and the team's working methodology is indicative of the company's philosophy.

We tackle projects with a «lean» approach through effective team leadership, high caliber team members and attention to details during execution.

Our team is involved in the cycle of each project from the moment of initiation to the moment of close-out. This entails the team's engagement and effectiveness in setting forth the project's goals and timelines, identifying the challenges and how they can be overcome, making timely modifications and responding rapidly to clients' needs.

Our facilities have been designed to empower our team and spark its innovation and excellence. FIRAS MAJZOUN INTERIORS' headquarters reflect the company's values and vision. Situated in Jordan's most cultural and artistic district, our offices are a landmark that stands for superior interior design transcending borders to reach clients around the globe.

A watercolor illustration of an open book. The left page is blank white. The right page is covered in a pattern of irregular, overlapping brushstrokes in shades of blue, purple, and brown. The book's spine and cover are rendered in dark brown tones with visible texture. A thin yellow line outlines the top and right edges of the book. A thin black horizontal line is drawn across the middle of the image, passing behind the text.

**“THERE AIN’T NO  
RULES AROUND  
HERE. WE’RE TRYING  
TO ACCOMPLISH  
SOMETHING.”**

**THOMAS EDISON**



# ACCOMPLISHMENTS

---

FIRAS MAJZOUB INTERIORS' affluent portfolio of premium projects reflects its advanced level of professionalism and excellence... a glamorous luminary in the sphere of interior design and execution. Under the distinguished leadership of its chief interior designer Firas Majzoub, the company prides itself with the wide range of successful and outstanding projects it has implemented since its inception.

Our accomplishments include residential projects, 5 star hotels, and retail stores, private and public facilities. At this point, the design becomes ready for creation and our team facilitates the transformation of the ideas into aesthetic and practical fantasies.

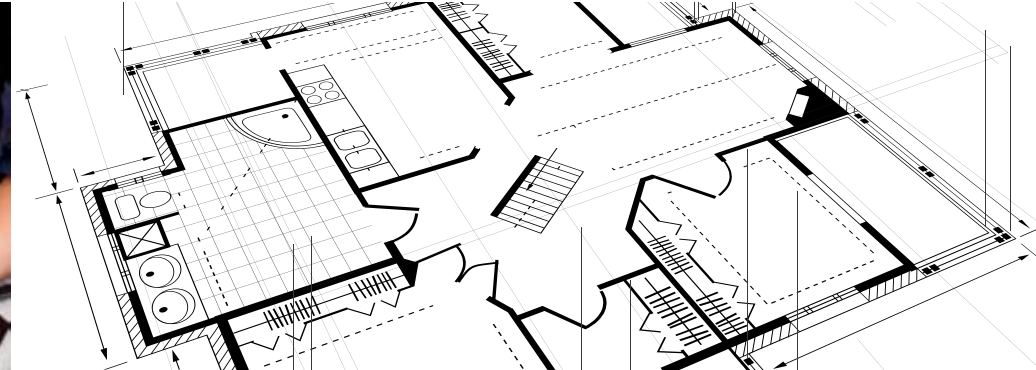


# WORK PROCESS

## CONCEPT. SCHEMATIC. DEVELOPMENT. DETAILS

Our work process is structured based on a carefully studied methodology that ensures the efficiency and effectiveness of our work, all along providing our clients with clear direction and understanding of their project's status and details.

8



### 1) CONCEPT DEVELOPMENT

The initiation phase entails concept development for the project which doesn't only take into consideration the visual or ambient enhancement of an interior space but also seeks to optimize and harmonize how the built environment will be utilized.

In this phase we conduct the space study, develop the layout plan and identify the brand requirements and needed equipment for the facility, as the residence life style and back ground. Throughout this phase special attention is given to circulation and identification of the functionality of each area and how each element of the space is related to the rest of the components.

### 2) SCHEMATIC DESIGN

Once the client approves the concept, our team proceeds to developing the schematic design which builds on the concept and adds to it the various design accents such as the color schemes and layout.

This phase is a multi-faceted endeavor which blends creative and technical solutions together within a structure to achieve a built interior environment that satisfies clients' needs and links space to business strategies and goals. FIRAS MAJZOUB INTERIORS provides functional solutions that enhance the quality of life of users and are aesthetically attractive. The schematic design is created with a multi dimensional approach that tackles the physical location and social context of the project taking into consideration the client's requirements all along.



### 3) DESIGN DEVELOPMENT

FIRAS MAJZOUB INTERIORS' designs adhere to code and regulatory requirements and support environmental sustainability

In this phase our team further works on space as a unit by itself and also as a component of a whole project. During this phase, the concept is developed further and synthesized into a well defined and feasible design. The schematic drawings are revised and further refined then transformed into 3D for client's final approval.

### 4) DETAILED DRAWINGS

Once the project reaches the «details» phase, FIRAS MAJZOUB INTERIORS' team refines and fixes the design in addition to working out all the details, including the selection of items & materials and highlights for electro-mechanical needs.

At this point, the design becomes ready for creation, where our team facilitates the transformation of the ideas into aesthetic and practical fantasies.



EXECUTIVE OFFICE & BUSINESS LOUNGE  
RIYADH, KSA

450 SQM

● DESIGN ○ EXECUTION ○ SUPERVISION







COMMERCIAL SPACE  
(PRESS AND MANAGEMENT OFFICES)  
AMMAN, JORDAN  
300 SQM

◎ DESIGN   ◎ EXECUTION   ◎ SUPERVISION







COMMERCIAL SPACE  
(PRESS AND MANAGEMENT OFFICES)  
AMMAN, JORDAN  
300 SQM

◎ DESIGN   ◎ EXECUTION   ◎ SUPERVISION

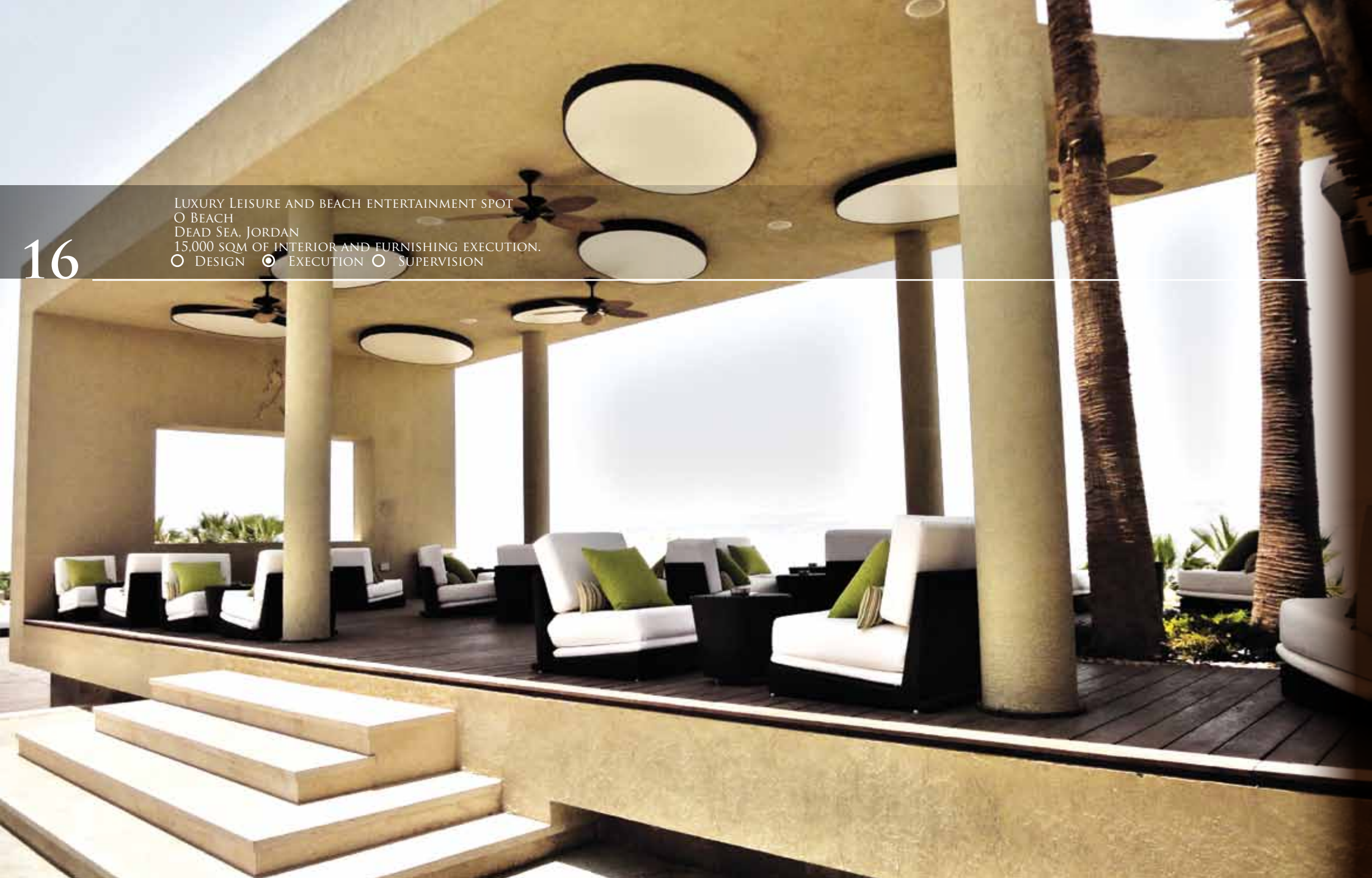








LUXURY LEISURE AND BEACH ENTERTAINMENT SPOT  
○ BEACH  
DEAD SEA, JORDAN  
15,000 SQM OF INTERIOR AND FURNISHING EXECUTION.  
○ DESIGN ● EXECUTION ○ SUPERVISION







LUXURIOUS RESIDENTIAL APARTMENTS  
AMMAN, JORDAN  
300 SQM  
● DESIGN ○ EXECUTION ● SUPERVISION









PRIVATELY OWNED EXQUISITE VILLA  
AMMAN, JORDAN  
500 SQM. OF INTERIORS, EXTERIORS AND LANDSCAPING  
● DESIGN ● EXECUTION ● SUPERVISION







PRIVATE RESIDENTIAL VILLA  
AMMAN, JORDAN

350 SQM

DESIGN EXECUTION SUPERVISION







PRIVATE RESIDENTIAL VILLA  
AMMAN, JORDAN

350 SQM

● DESIGN ● EXECUTION ● SUPERVISION







LUXURY EXECUTIVE SUITES  
RIYADH, KSA

2000 SQM

● DESIGN ○ EXECUTION ○ SUPERVISION





COMMERCIAL AND RETAIL SHOWROOM  
AMMAN, JORDAN  
100 SQM  
● DESIGN ○ EXECUTION ○ SUPERVISION







COMMERCIAL OUTLET (SHOWROOM & OFFICE SPACE)  
AMMAN, JORDAN  
700 SQM  
● DESIGN ● EXECUTION ● SUPERVISION



---

“ I NEVER DESIGN A BUILDING BEFORE I’VE SEEN THE SITE  
AND MET THE PEOPLE USING IT “

Frank LLOYD WRIGHT



